

APPLICATION GUIDE & SUGGESTED SUPPLIES

PREP

Debride wound and ensure wound is free of active infection and remove all necrotic (dead) tissue.

Cleanse wound with saline. DO NOT use Bentadyne.



- Curette
- Scalpel
- Saline moistened gauze

OPEN

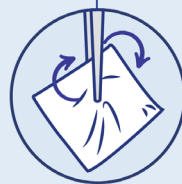
Open outer pouch and put the inner sterile sealed pouch containing allograft material on the procedure field.



- Tides Medical graft

PLACE

Place allograft on granular bed of wound. Either side of product may be placed on wound bed. If wound bed is dry, add saline.



COVER

Apply a wide, non-adherent mesh/contact layer over wound bed. Exceed wound bed boundaries by 1 cm.

Anchor non-adherent mesh/contact layer using preferred method of fixation.

Cover with a secondary dressing.



- Wide non-adherent mesh/contact layer, i.e. Adaptic™ or Mepitel®.
- Fixation product of choice, i.e. Steri-Strip™ or paper tape.
- Secondary dressing. If drainage is:
Scant: use dressing moistened with Saline or Hydrogel
Moderate/heavy: use gauze or other absorbent dressing

SECURE

Secure or wrap dressing to keep from unraveling.

Tides Medical products should not be distributed or removed until next application or per provider's instructions.



- Transparent film dressing, i.e. Tegaderm™, Coban™, or roll gauze

EVALUATE

Evaluate wound and repeat application weekly or at discretion of health care provider.

